

PTGDR Antibody (C-Term)
Purified Rabbit Polyclonal Antibody (Pab)
Catalog # AP22292b

Specification

PTGDR Antibody (C-Term) - Product Information

Application	WB,E
Primary Accession	Q13258
Reactivity	Human
Host	Rabbit
Clonality	polyclonal
Isotype	Rabbit IgG
Calculated MW	40271

PTGDR Antibody (C-Term) - Additional Information

Gene ID 5729

Other Names

Prostaglandin D2 receptor, PGD receptor, PGD2 receptor, Prostanoid DP receptor, PTGDR

Target/Specificity

This PTGDR antibody is generated from a rabbit immunized with a KLH conjugated synthetic peptide between 306-348 amino acids from human PTGDR.

Dilution

WB~~1:2000

E~~Use at an assay dependent concentration.

Format

Purified polyclonal antibody supplied in PBS with 0.09% (W/V) sodium azide. This antibody is purified through a protein A column, followed by peptide affinity purification.

Storage

Maintain refrigerated at 2-8°C for up to 2 weeks. For long term storage store at -20°C in small aliquots to prevent freeze-thaw cycles.

Precautions

PTGDR Antibody (C-Term) is for research use only and not for use in diagnostic or therapeutic procedures.

PTGDR Antibody (C-Term) - Protein Information

Name PTGDR

Function Receptor for prostaglandin D2 (PGD2). The activity of this receptor is mainly mediated by G(s) proteins that stimulate adenylate cyclase, resulting in an elevation of intracellular cAMP. A mobilization of calcium is also observed, but without formation of inositol 1,4,5-trisphosphate (By

similarity). Involved in PLA2G3- dependent maturation of mast cells. PLA2G3 is secreted by immature mast cells and acts on nearby fibroblasts upstream to PTDGS to synthesize PGD₂, which in turn promotes mast cell maturation and degranulation via PTGDR (By similarity).

Cellular Location

Cell membrane; Multi-pass membrane protein

Tissue Location

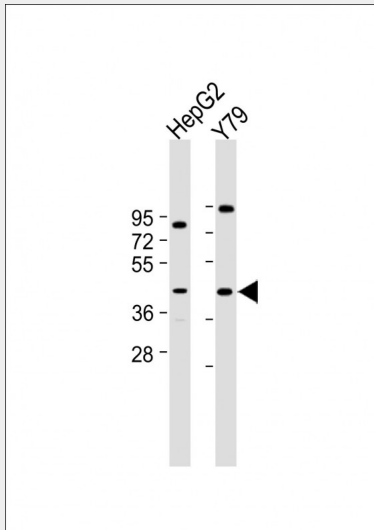
Expressed in retinal choroid, ciliary epithelium, longitudinal and circular ciliary muscles, iris, small intestine and platelet membranes.

PTGDR Antibody (C-Term) - Protocols

Provided below are standard protocols that you may find useful for product applications.

- [Western Blot](#)
- [Blocking Peptides](#)
- [Dot Blot](#)
- [Immunohistochemistry](#)
- [Immunofluorescence](#)
- [Immunoprecipitation](#)
- [Flow Cytometry](#)
- [Cell Culture](#)

PTGDR Antibody (C-Term) - Images



All lanes : Anti-PTGDR Antibody (C-Term) at 1:2000 dilution Lane 1: HepG2 whole cell lysate Lane 2: Y79 whole cell lysate Lysates/proteins at 20 µg per lane. Secondary Goat Anti-Rabbit IgG, (H+L), Peroxidase conjugated at 1/10000 dilution. Predicted band size : 40 kDa Blocking/Dilution buffer: 5% NFDN/TBST.

PTGDR Antibody (C-Term) - Background

Receptor for prostaglandin D₂ (PGD₂). The activity of this receptor is mainly mediated by G(s) proteins that stimulate adenylate cyclase, resulting in an elevation of intracellular cAMP. A mobilization of calcium is also observed, but without formation of inositol 1,4,5-trisphosphate (By similarity).

PTGDR Antibody (C-Term) - References

Boie Y.,et al.J. Biol. Chem. 270:18910-18916(1995).
Martin A.L.,et al.Submitted (APR-2007) to the EMBL/GenBank/DDBJ databases.
Heilig R.,et al.Nature 421:601-607(2003).
Mural R.J.,et al.Submitted (SEP-2005) to the EMBL/GenBank/DDBJ databases.
Town M.H.,et al.Prostaglandins 25:13-28(1983).